

# Messenger Light

February 14, 2024



## Get Your Tickets For: "Into The Woods"

Hello First Pres. Family,

Next month, Pastor Matthew will be starring as the Baker in Musical Theatre Southwest's Production of Into the Woods. The show will be running for most of the month of March, and we hope as many of our First Pres. Folks can cheer him on! We plan on taking a church outing to the theater on Saturday, March 9 for the 7:30 pm show, and we would love for you to join us! We have reserved a small number of tickets ahead of time that are first come first serve. You can claim them by signing up in the office. The cost is \$29 per ticket.

You can also purchase tickets of your own, for the March 9th Performance or a different one at the following link:

<https://onthestage.tickets/show/musical-theatre-southwest/653838b4281a7foe5876a567/tickets>.

We look forward to cheering on Matthew and enjoying the magic of the theatre. We look forward to seeing you there.

If you have any questions about this event, you can reach out to Pastor Essie ([essie.kr@firstpresabq.org](mailto:essie.kr@firstpresabq.org))

### Church Office Hours **Monday—Thursday** **8:00am to 2:00pm**

Our staff members can be reached individually by phone or email between 8am and 2pm, Monday through Friday:

**Matthew Miller**

505-764-2902

**Essie Koenig-Reinke**

505-764-2903

**Leon Lake**

505-764-2914

**Carolyn Rhodes**

505-764-2906

**Alona Watchman**

505-764-2911

**Sharon Baca**

505-764-2900

If you have an after-hours emergency, you can reach pastoral staff through our helpline at 505-764-2910

**First Presbyterian  
Church (USA)**

**215 Locust Street, NE  
Albuquerque, NM 87102**

**505-764-2900  
[www.firstpresabq.org](http://www.firstpresabq.org)**



## Calendar for the Week

### **Thursday, February 15th**

- ABQ Girls Choir; 4:30 pm in Choir room
- High Desert Pipes and Drums rehearsal, 6:30pm in F.H.

### **Sunday, February 18th**

- In-person Fellowship Hall Worship Service at 8:30am
- Through the Bible Class at 9:45am in CE Room 219
- Adult Sunday School at 9:45am via Zoom/In-person in Kerygma Room
- Godly Play Sunday School at 9:45am in CE Room 210
- In-person/Livestream Sanctuary Worship Service, 11am
- Board of Deacons meeting, 12:15pm in F.H.
- PW Sarah's Circle meeting, 12:30pm in Kerygma room

### **Monday, February 19th**

- Enchanters; 5:45 pm in Choir room
- Women's Chorus Rehearsal; 6:30 pm in F.H.

### **Tuesday, February 20th**

- Building & Grounds Committee meeting, 9:30am in Conference room
- Prayer / Book Study Group at 12:00pm via Zoom
- ABQ Boys Choir Rehearsal; 5:30 pm
- Sandia Pipes and Drums rehearsal; 6:00 pm in F.H.

### **Wednesday, February 21st**

- Chancel Choir Rehearsal, 6:30pm in Choir Loft

### **Thursday, February 22nd**

- FPC Fiction Book Group, 10:00am in Conference room
- ABQ Girls Choir; 4:30 pm in Choir room
- High Desert Pipes and Drums rehearsal, 6:00pm in F.H.

### **Sunday, February 25th**

- In-person Fellowship Hall Worship Service at 8:30am
- Through the Bible Class at 9:45am in CE Room 219
- Adult Sunday School at 9:45am via Zoom/In-person in Kerygma Room
- Godly Play Sunday School at 9:45am in CE Room 210
- In-person/Livestream Sanctuary Worship Service, 11am

---

## Mental Health Presentations

Two members of the Mental Health Committee will be making presentations during February, Healthcare month, in the Kerygma room at 9:45 AM:

On February 18th, Lane Leckman, a retired psychiatrist, will speak on depression and suicide.

On February 25th, Jen Rautman will speak about NAMI, the Alliance on Mental Illness, which addresses the needs and stresses of the mentally ill and their families.

## Giving Options

FPC works in our ministries to reach out to members of the church and our greater community. You can send contributions by mailing checks to the church:

### **First Presbyterian Church**

**215 Locust Street NE, Albuquerque, NM 87102**

You can give online at [www.firstpresabq.org](http://www.firstpresabq.org), click on the yellow "Give Online" button in the menu bar. Follow the instructions in the new window that opens to make your donations.

**\* Remember to pay your Per Capita! The 2024 amount is \$37.00. You can pay in person or online.**

**Reminder:** We are always accepting donations to our Rio Grande Food bin (canned/dry food) and to our HopeFound box (household supplies). These ongoing ministry partners are always in need of extra supplies!



### **Albuquerque Refugee & Asylee Programs**

Thank you for thinking of LFSRM for your donations of furniture and household goods! When a refugee family arrives, LFSRM secures an apartment and furnishes the apartment with all the necessities. We rely on donations of new and gently used items from the community to be able to give refugees a warm welcome! For large items and furniture, we are able to pick-up Monday through Friday, but please understand that we are a small operation and so we are generally not able to pick up with short notice. Please call our office in advance to schedule. Thank you for your generosity! You can pick up the full list of items in the church office!

**Contact Information:** Safaa Abid Housing and Donation Coordinator Lutheran Family Services Rocky Mountains (505) 355-5352 [safaa.abid@lfsrm.org](mailto:safaa.abid@lfsrm.org) [www.lfsrm.org](http://www.lfsrm.org)

Drop Off Location: 230 Truman St NE, Albuquerque, NM 87108

## FPC Endowment Foundation Heritage Club

The Heritage Club of the Church's Endowment Foundation was established to recognize contributions to the Foundation of \$1,000 or more. We are pleased to announce and welcome our most recent members, Stephen and Kathy Rhoades. Donors are recognized on the plaques in the hall outside the main conference room.

Cash donations like this are very much appreciated and are an important source of funds to help the work of Endowment Foundation in support of the church and its members. In addition to contributing to the church's annual budget, the Endowment Foundation helps support the work of the Music and Worship, Christian Education, Buildings and Grounds, Deacons, and Missions Committees. Additionally, aid is provided from the Endowment Foundation to A Child's Garden, retired ministers and their spouses, Menaul School, and scholarship funds for church members attending UNM.

Donations in support of the Foundation and its work may be made in several ways - through cash gifts, donations through wills or trusts, charitable gift annuities, and more. For information on giving to the Foundation, please contact Bob Bowersock, Executive Director, through the church office.

---

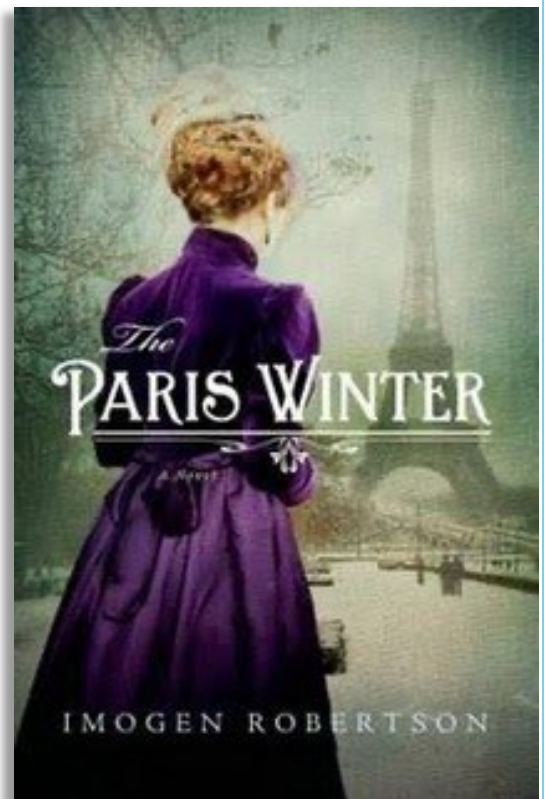
## FPC Fiction Book Group for February

Our next book will be *"The Paris Winter"* by Imogen Robertson. We will be meeting on February 22nd, 2024 at 10am in the Conference room, meeting leader is Carol Marr.

### **About the book** (from the back cover):

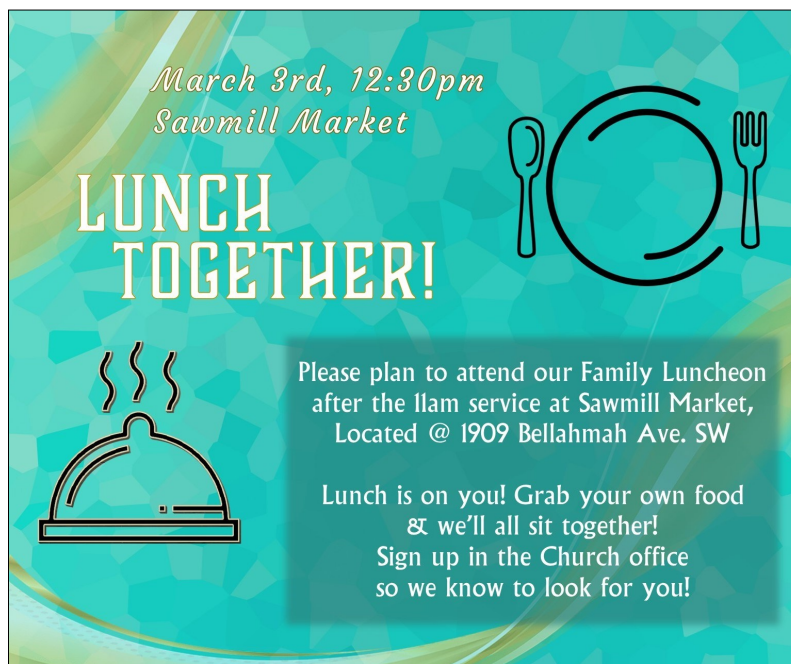
Maud Heighton came to Lafond's famous Academie to paint, and to flee the constraints of her small English town. It took all her courage to escape, but Paris, she quickly realizes, is no place for a light purse. While her fellow students enjoy the dazzling decadence of the Belle Epoque, Maud slips into poverty. Quietly starving, and dreading another cold Paris winter, she stumbles upon an opportunity when Christian Morel engages her as a live-in companion to his beautiful young sister, Sylvie. Maud is overjoyed by her good fortune. With a clean room, hot meals, and an umbrella to keep her dry, she is able to hold her head high as she strolls the streets of Montmartre. No longer hostage to poverty and hunger, Maud can at last devote herself to her art.

But all is not as it seems. Christian and Sylvie, Maud soon discovers, are not quite the darlings they pretend to be. Sylvie has a secret addiction to opium and Christian has an ominous air of intrigue. As this dark and powerful tale progresses, Maud is drawn further into the Morels' world of elegant deception. Their secrets become hers, and soon she is caught in a scheme of betrayal and revenge.





## From the Community Life Committee: Family Lunch @ Sawmill Market



### UNM Continuing Education Class: The Philosophy of History

UNM Continuing education in-person class with Rev. Frank Yates. This course will examine how philosophy and religion have understood the great sweep of human history. Some see history as circular, repeating itself again and again (perpetual Ground Hog Day). Others see history as going nowhere and ending not with a bang but with a whimper (especially the environmental dooms day folks). Others see history as linear and heading toward a purposeful conclusion. Many philosophers and theologians have examined this topic. We will be taking our bearings from the book *The Philosophy of History* by Mark Day.

This will be an in-person class meeting on Mondays from 10AM-11:30AM, beginning March 4th to March 25th. Visit the UNM continuing education website for registration:

[https://continuinged.unm.edu/course/19887?](https://continuinged.unm.edu/course/19887?_gl=1*j1ugap*_gcl_au*MjA4MTUxOTkxNS4xNzA3NzYyNTAx*_ga*Mjc1NjMyNTM1LjE3MDc3NjI1MDE.*_ga_EK55oDL6D8*MTcwNzc2MjUwMS4xLjEuMTcwNzc2Mjg5Ny42MC4wLjA)

[\\_gl=1\\*j1ugap\\*\\_gcl\\_au\\*MjA4MTUxOTkxNS4xNzA3NzYyNTAx\\*\\_ga\\*Mjc1NjMyNTM1LjE3MDc3NjI1MDE.\\*\\_ga\\_EK55oDL6D8\\*MTcwNzc2MjUwMS4xLjEuMTcwNzc2Mjg5Ny42MC4wLjA](https://continuinged.unm.edu/course/19887?_gl=1*j1ugap*_gcl_au*MjA4MTUxOTkxNS4xNzA3NzYyNTAx*_ga*Mjc1NjMyNTM1LjE3MDc3NjI1MDE.*_ga_EK55oDL6D8*MTcwNzc2MjUwMS4xLjEuMTcwNzc2Mjg5Ny42MC4wLjA)

In addition, Rev. Frank Yates will also holding an Oasis Lecture: *The Spiritual Journey of Blaise Pascal, Part 2*. This is the second lecture on Blaise Pascal focuses on the 18 “Provincial Letters” he wrote between 1656-1657 in support of Jansenism over Jesuit casuistry (a form of moral reasoning). It’s a fascinating look at theological controversy in the 17th century regarding human free will and divine grace. The official church reaction to Jansenism was to condemn the errors of this movement. Pascal wrote these letters in defense of divine grace.

This is a single session lecture taking place on Monday, February 26th from 10am-11:30am. Visit the Oasis of ABQ website for further information or to register:

<https://albuquerque.oasiseverywhere.org/product/the-spiritual-journey-of-blaise-pascal-part-2/>



## **Support our school community. Join the ACG Board!**

Would you like to get more involved in the ACG community and contribute to important decisions about our school? Consider joining the ACG Board!

The ACG Board is looking for new members for the 2024-25 school year. The Board brings together parents, staff and community members to nurture a strong school community and provide leadership and guidance on a range of issues, from curriculum to tuition to fundraising. No special skills or experience required — all you need are an interest in making a difference and a desire to contribute to the future of the school.

### **Board Member Responsibilities**

- Attend a monthly meeting on the third Thursday of the month, 11:30am-1pm, from August to May
- Participate on at least two committees that support important school functions
- Volunteer for one or more ACG events during the school year

**Interested? Reach out!** If you have questions or would like to join the board, please email Nominating Committee members Erin Halasz ([erin.halasz@gmail.com](mailto:erin.halasz@gmail.com)), Sara Tolbert ([saratolbert19@gmail.com](mailto:saratolbert19@gmail.com)) and Madeline Matteucci ([madeline.matteucci@yahoo.com](mailto:madeline.matteucci@yahoo.com)).

We're happy to help!

# A CHILD'S GARDEN SPRING SOIREE

## FUNDRAISER IN FULL BLOOM

### Sponsorship Opportunities

All funds raised go to  
Tuition Assistance for our Community  
&  
Professional Development for our Educators



#### SUPER BLOOM

- 4 Tickets to A Child's Garden Spring Soiree – Fundraiser in Full Bloom
- Reserved Parking and a Reserved Table at the Event
- 4 Coupons in ACG's local business coupon book
- Logo in coupon book
- Listing in School Publication and Website
- Recognition at the Event

**\$1000**

#### SPROUT

- 4 Tickets to A Child's Garden Spring Soiree – Fundraiser in Full Bloom
- 3 Coupons in ACG's local business coupon book
- Logo in coupon book
- Listing in School Publication and Website
- Recognition at the Event

**\$750**

#### GREEN THUMB

- 2 Tickets to A Child's Garden Spring Soiree – Fundraiser in Full Bloom
- 2 Coupons in ACG's local business coupon book
- Listing in School Publication and Website
- Recognition at the Event

**\$500**

#### SPONSOR A TEACHER

Cover the ticket cost of an ACG Teacher to Attend

**\$100**

TO SECURE A SPONSORSHIP, PLEASE VISIT OUR SQUARE SITE  
[HTTPS://A-CHILDS-GARDEN.SQUARE.SITE/](https://a-childs-garden.square.site/)